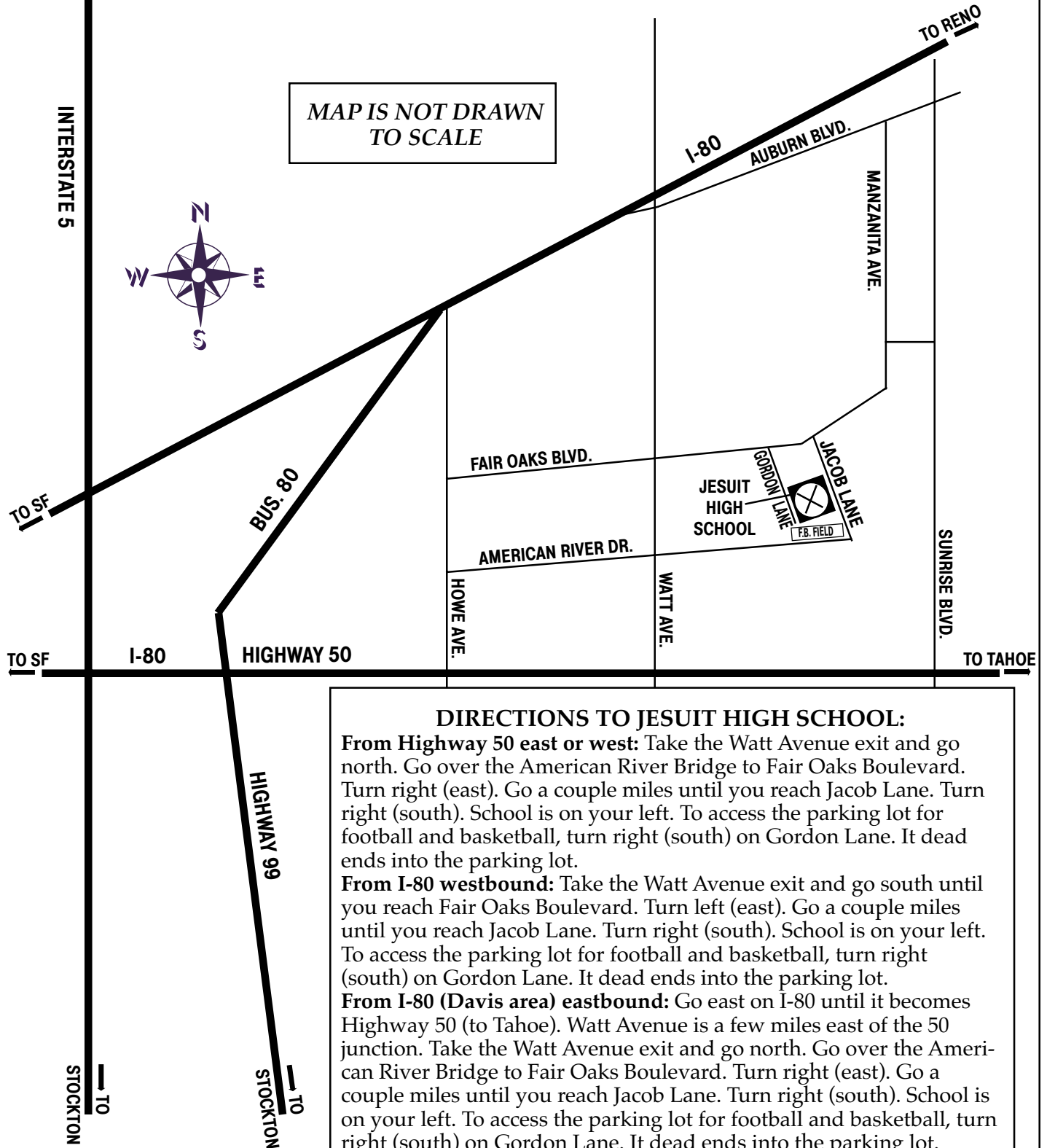


JESUIT HIGH SCHOOL

1200 Jacob Lane
Sacramento

MAP IS NOT DRAWN
TO SCALE



DIRECTIONS TO JESUIT HIGH SCHOOL:

From Highway 50 east or west: Take the Watt Avenue exit and go north. Go over the American River Bridge to Fair Oaks Boulevard. Turn right (east). Go a couple miles until you reach Jacob Lane. Turn right (south). School is on your left. To access the parking lot for football and basketball, turn right (south) on Gordon Lane. It dead ends into the parking lot.

From I-80 westbound: Take the Watt Avenue exit and go south until you reach Fair Oaks Boulevard. Turn left (east). Go a couple miles until you reach Jacob Lane. Turn right (south). School is on your left. To access the parking lot for football and basketball, turn right (south) on Gordon Lane. It dead ends into the parking lot.

From I-80 (Davis area) eastbound: Go east on I-80 until it becomes Highway 50 (to Tahoe). Watt Avenue is a few miles east of the 50 junction. Take the Watt Avenue exit and go north. Go over the American River Bridge to Fair Oaks Boulevard. Turn right (east). Go a couple miles until you reach Jacob Lane. Turn right (south). School is on your left. To access the parking lot for football and basketball, turn right (south) on Gordon Lane. It dead ends into the parking lot.